

V.I.N. (Vehicle Identification Number) Reproduction

CONDITIONS OF SALE

BDESIGNS offers the service of VIN plate/sticker reproductions for vintage bike owners, whose bikes have had their VIN plates damaged beyond being readable, or to replace the current VIN when it is pulled to sandblast and re-paint the frame. If your model of motorcycle (vehicle) is **not** listed in the document [VIN Models Available](#), we would need evaluate if we can assist you or not. Please provide the manufacturer, year and model of your bike and send at least one clear picture of the VIN along with your request to vin@bdesigns.ca. If your VIN is missing and can't provide a picture, please read the "Note" in the Artwork Requirements section below, regarding missing VIN's. We can not evaluate your request without a picture. Once we confirm we can reproduce the VIN for you, we will need all the documentation as listed in the sections below. If your model is listed, please continue reading the rest of this document.

Be aware that in some Countries, States or Provinces, it MAY be a Federal or Provincial offence to wilfully remove a VIN sticker or plate. Most areas MAY accept removal under certain circumstances if it will be replaced with an exact duplicate or a Department of Motor Vehicle issued sticker. All Countries, States and Provinces may differ, so it is up to the customer to find out the legal requirements in their jurisdiction.

It is sometimes possible to remove the current VIN sticker for frame painting without damaging the sticker during removal. If you choose to remove the current sticker, you should take some clear close-up photos and dimensions of the current VIN sticker prior to removing it. If you manage to remove the original VIN intact, use a 3M double sided tape to re-install the VIN after painting. If it should be damaged during removal, we usually can reproduce it for you, providing you documented and photographed the original VIN sufficiently.

VIN Pricing

VIN printed only, on standard white: \$64.20

VIN and Emission set - printed only, on standard white: \$73.28

VIN printed only, on reflective white (common to Yamaha early models): \$77.68

VIN printed only, on standard white - With Overlamine (like Kawasaki models) - \$70.45

VIN and Emission set - printed only, on standard white - With Overlamine (like Kawasaki models) - \$79.54

VIN printed only, on standard white - with bardcodes (barcodes may not function) - \$92.96

VIN printed only, on standard white - with bardcodes and overlamine (barcodes may not function) - \$108.74

VIN printed on standard white with Stamped Numbers/Letters: \$87.33

VIN/Manufactured Plate, standard white on Metal Plate - NO Stamped Numbers/Letters - \$90.96

VIN/Manufactured Plate, standard white on Metal Plate - with Stamped Numbers/Letters - \$105.34

If your model has the small round Canada Transport Inspection sticker (CMVSS), these are included at no charge with the purchase of a VIN.

Shipping is extra. All pricing is in Canadian. For approximate currency conversion, visit xe.com

Legal Requirements for Reproduction - Please Read Thoroughly

Protecting consumer privacy is one of our highest priorities. Please read our full Privacy Policy on the "About Us" page on our website. BDesigns does not sell, share or distribute this information required to reproduce VIN's to other individuals or parties and is kept completely confidential. The collection of the required information is necessary to prevent fraudulent requests for reproduction VIN's. Any photo ID is deleted after confirmation that the same person is listed on the ownership documents. Ownership documents are retained on file for possible future audit purposes. Potential customers have the right to refuse to provide requested information and BDesigns has the right to refuse reproduction and sale.

Required Information

- Full name, address and phone number.
- Year, make and model of your motorcycle.
- A high resolution scan of any Government issued photo I.D. such as a drivers licence (both sides if you have information on both sides) for personal verification. Please block out any personally sensitive information such

as drivers licence number, Social Insurance number, Health Card number, etc. We are only looking for any identification that shows your picture with address that is an official government issued document.

- A clear photo of the matching VIN number off the frame (and engine casing if possible).
- A high resolution colour scan of your full ownership card showing the VIN for proof of ownership.
 - In some cases, our customers have purchased a "basket case" motorcycle that has no registration or ownership. Depending on what Country, State or Province you are in, you usually need a Declaration from a Notary Public along with Bill of Sale to have the vehicle registered in your name. These documents are acceptable in place of an ownership card in your name.
 - In some cases, our customers are in a period of transition from when they purchased their bike, but have not yet registered it in their name. In cases like this, a Transfer of Ownership document in your name, along with the bill of sale in your name, are acceptable documents.

Artwork Requirements - Please Read Thoroughly

- The original VIN, if intact - this is the best method, or;
- A non-resized scan of the original VIN, or;
- A sufficient number of clear, close-up, high resolution photos of the original VIN along with a measurement of the overall length and width. If the VIN is applied to a curved surface additional information is required. For further details on what is required for sending photos of a VIN that is mounted to a flat or curved surface, see instructions and examples below.
- For VIN's with barcode, we need a very close up, high resolution, well focused image. We also need an exact measurement of the overall length and height of the barcode.

Note:

- If your VIN is mostly gone or damaged and unreadable, and if your motorcycle year and model **is** among the list of VIN's in the [VIN Models Available](#) document, then we can reproduce your VIN with just the numbers from your ownership and photos from the engine casing and frame.
- If your VIN is mostly gone or damaged, and we do **NOT** have your motorcycle year and model among our list of VIN's, we may still be able to help you if you can obtain and supply some images and possibly measurements from; A) "Parts" bikes you own, B) Bikes from your local motorcycle wrecker and, C) You can ask for help from members among Internet Forums supporting your model of motorcycle. Members may be able to supply images and dimensions from their motorcycle and we would use your specific VIN information on the reproduction.

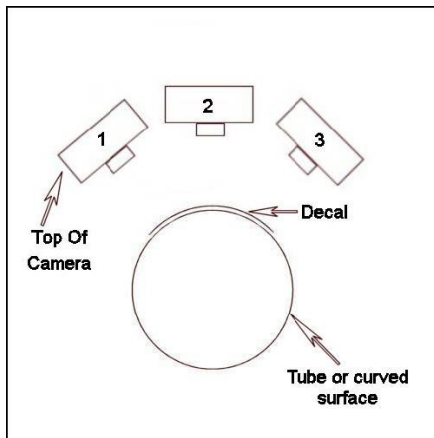
Photograph Capturing of Original VIN - Please Read Thoroughly

If you have decided to send photo's of the VIN to be reproduced, please ensure you carefully follow the information below.

We would need straight on (so it is not distorted at an angle) close-up shots of the VIN. They must be clear and legible. Macro mode may be required, depending on how close you are to the decal. Too close, and the photographs become distorted around the edges. Too far away, the photos may not be clear enough. Please photograph, and then **review the VIN photos on a computer monitor (not cell phone or tablet)** to determine if the photos are acceptable, and before you remove the original VIN. Measurements are also required for overall size. Measurements of border sizes, text heights, etc., are also helpful. The more information, the more successful the reproduction. In cases where the decals are on curved surface, such as a steering column tube, we may be able to use the same procedure as above, but with additional pictures from different angles. See the Figure 1 example below for the following procedure. Turning the camera in line with the steering tube, so the text looks normal in the viewfinder, we would need multiple shots orbiting the tube or curved surface. The more curved the surface, the more shots that are required. Take lots of clear pictures from many positions to ensure everything is properly captured. Although 3 positions orbiting the tube is shown below, we need a **minimum** of 7 positions orbiting the tube.

NOTE: If the number of images, quality, size and position do not meet the requirements above, you will be asked as many times as necessary to supply the correct images.

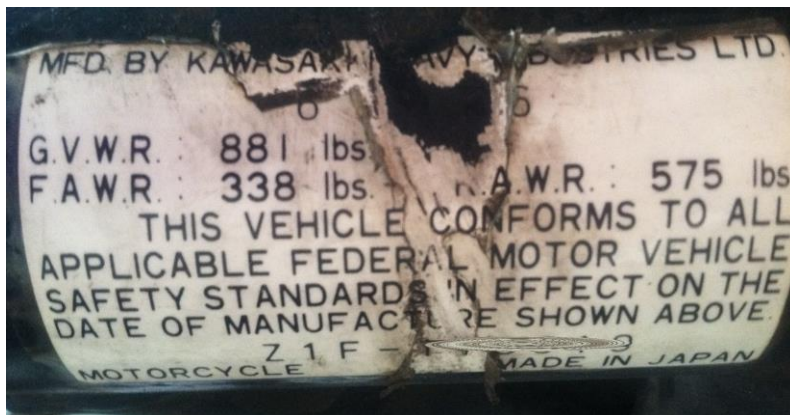
FIGURE 1



EXAMPLES OF VIN PICTURES ON A TUBE



This image above is NOT acceptable - VIN is shot at an angle, out of focus, too low a resolution, partially cut off, and has only one photo (not as shown above in the diagram).



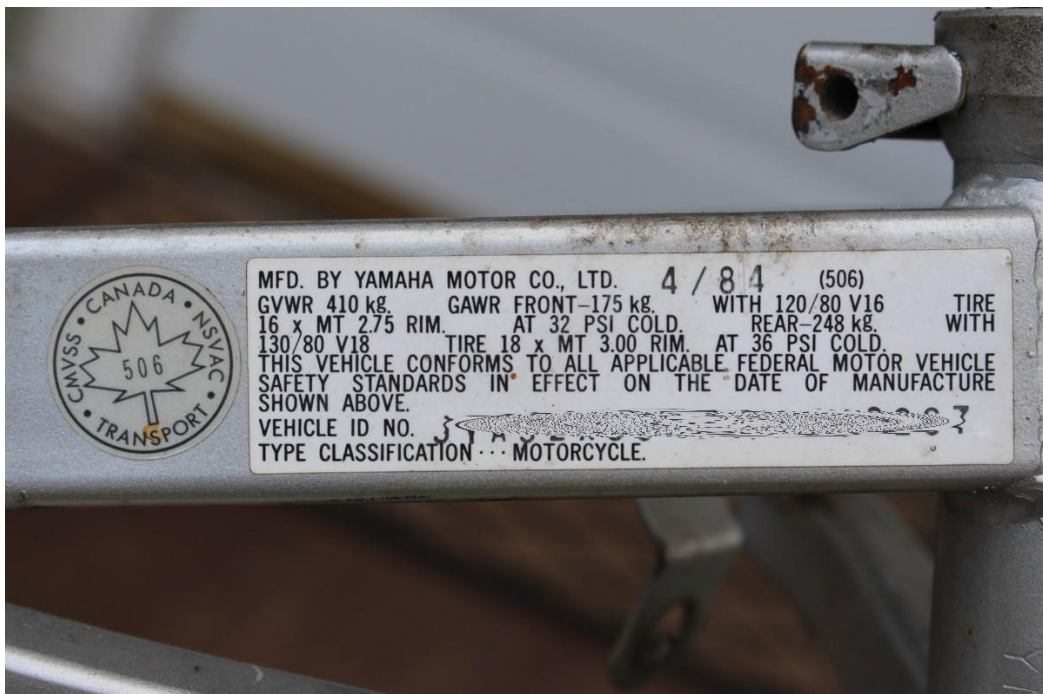
The photos to the left are mostly acceptable. The actual photos are much larger and a higher resolution. A little clearer and further away would be more acceptable. When shooting this close, you need to capture a shot that focuses on about 2 or 3 lines of text at a time. We did not show all the shots taken, just enough to give an idea of how they should appear. These pictures are fairly well aligned (not skewed). It would be best if the focus was a bit more clear.



EXAMPLES OF FLAT VIN PICTURES



This image above is NOT acceptable - VIN is shot at an angle and/or is partially cut-off.



Acceptable - VIN is shot straight on, no distortion, and is clear.

NOTE: Suzuki VIN's

Some Suzuki VIN's, in particular from the very late 70's and into the 80's have font for the stamped VIN and Date numbering that is very narrow in relation to it's height and we have not been able to find any stamp tooling to match this. In cases like this, there are two options. We can print and stamp the numbers (the originals were done this way) but the font will be wider, and not look so much like the original. It may appear cramped also.

The other option is what most people want and are quite happy with, is that we just print the numbers on, but we highlight the print with a white "edge shading" effect. This gives the illusion of stamping, while retaining the look of the original font. We reference photos for what the normal viewing angle would be when looking at the bike where the VIN is located and use this angle to simulate light coming at the "correct" angle, so it gives more realism. Please inform us if the printed approach is acceptable to you and please provide a picture on how the VIN is situated on the bike (which end is up and forward).

Once you have collected all the information, please send to BDesigns in either of the following methods;

Email (preferred) all scanned documents and other information to vin@bdesigns.ca
When emailing images, do NOT allow your email program to resize the images, we need them kept full size and resolution.

For originals, post mail to;

BDesigns
243 Michener Crescent
Kitchener, Ontario
Canada N2A 3V6

Updated 02/07/2024